



WEEKLY MANSION SHIN-URAYASU

20101009

Address: 4-1-29, Imagawa, Urayasu-shi, Chiba-ken, Japan 〒279-0022
Phone: 81-47-381-8201/Fax: 81-47-381-8202 (Business Hours are between 9 A.M. and 6 P.M.)

Reservations: Contact us at 81-3-3434-3939 (Tel) 81-3-3434-3927 (Fax)
For English, Please contact us between 9 A.M. and 6 P.M. from Mon to Fri.

■ On Site Pay Services:

- Coin laundries/Driers
- Parking lots/ Rental bicycles
- Vending machine (Beverages/ Newspaper)
- Non-smoking apartments

■ In-Room Services and Amenities:

High-Speed Internet access/ TV
Video-on-Demand
DVD/VCR player
Telephone/ Mini-refrigerator
Air conditioner/ Bed (Exchange of sheets and pillowcases is a chargeable service and on request.)
Table/ Kitchenware and Tableware
Bathroom/ Hairdrier

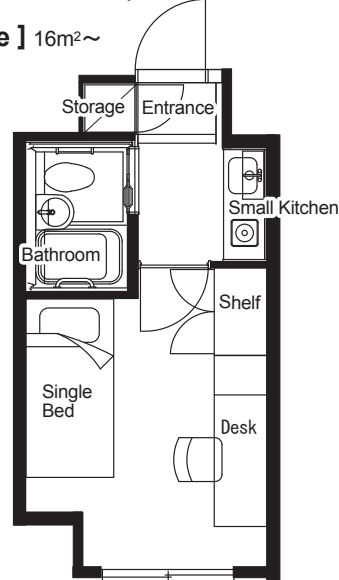
■ Business Services:

Copying and Facsimile Services
Delivery service (Domestic only).
* These services are available only during business hours.

Standard apartment layout

(Some apartments may differ from the following.)

[Single] 16m²~



住所 : 〒279-0022 千葉県浦安市今川4-1-29

電話 : 047-381-8201

The nearest stations:

1) JR Keiyo line, Shin-Urayasu station, Mihamaguchi A2 exit. 14-minute walk from the station.

From Narita Airport:

Take an Airport Limousine bus for " SHIN-URAYASU AREA HOTELS " and get off at the SHIN-URAYASU ORIENTAL HOTEL. ¥2,400/ one way. Traveling time is approx. 60-80 minutes. From the SHIN-URAYASU ORIENTAL HOTEL to the WM Shin-Urayasu, it takes about 15 minutes on foot. If you take a taxi from the hotel, the taxi fee is approx. ¥660.

From Haneda Airport:

Take Tokyo Monorail for "Hamamatsucho" and get off at Tennozu Airu station. ¥400/ one way. Traveling time is approx. 20 minutes. And then take Tokyo Rinkai Kosoku Tetsudo Rinkai line Kaisoku for "Shinkiba" from Tennozu Airu station to Shinkiba station. Traveling time is approx 10 minutes. ¥320/one way. And then take JR Keiyo line Kaisoku for "Soga" From Shinkiba station to Shin-Urayasu station. Traveling time is approx.10 minutes. ¥160/one way. From the station to the WM Shin-Urayasu, it takes about 15 minutes on foot.

The information above is subject to change without notice

WEEKLY MANSION TOKYO URL: <http://www.wmt.co.jp/en/>