



FLEXSTAY Kanda Inn

20120430

Address: 1-2-2, Iwamoto-cho, Chiyoda-ku, Tokyo, Japan 〒101-0032
Phone: 81-3-5835-3939/Fax: 81-3-5835-3966 (Business Hours are between 7 A.M. and 12 P.M.)

Reservations: Contact us at 81-3-3434-3939 (Tel) 81-3-6891-7711 (Fax)
For English, Please contact us between 9 A.M. and 6 P.M. from Mon to Fri.

■ On Site Pay Services:

- Coin laundries • Driers/
- Parking lots (Reservation required)
- Vending machine (Beverages/ Newspaper)
- Non-smoking apartments

■ In-Room Services and Amenities:

High-Speed Internet access/ TV / DVD • VCR combo
Video-on-Demand

Telephone/Mini-refrigerator/Air conditioner

Desk/ Chair/ Bed(Exchange of sheets and pillowcases is chargeable service and on request.)

Bathroom/ Minus ion hair drier / Vacuum cleaner

Mirror/ Coffeepot/ Shoehorn/

※Kitchenware and Tableware (Pls. ask the front desk for availability)

■ Business Services:

Copying and Facsimile Services

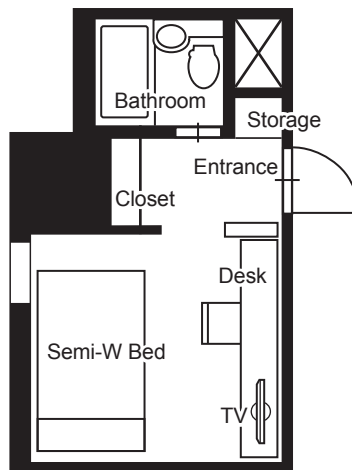
Parcel delivery service (Domestic only).

* These services are available only during business hours.

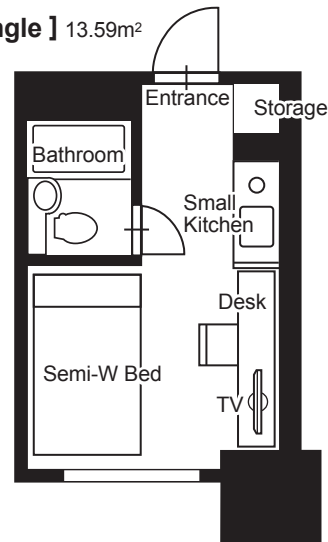
Standard apartment layouts

(Some apartments may differ from the following.)

[Single] 13.14m²~



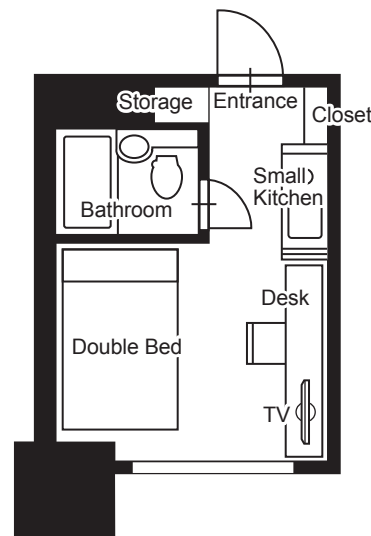
[Single] 13.59m²



住所 : 〒101-0032 東京都千代田区岩本町1-2-2

電話 : 03-5835-3939

[Unit for 1-2 people] 13.57m²~



The nearest stations:

- 1) JR Yamanote line, Kanda station, South exit, Subway Ginza line, Kanda station, #3 exit. 6-minute walk from both.
- 2) Subway Ginza line, Mitsukoshi-mae station, A9 exit. 5-minute walk from the station.
- 3) Subway Hanzomon line, Mitsukoshi-mae station, B4 exit. 10-minute walk from the station.

From Narita Airport:

Take Keisei Sky liner for "Keisei Ueno" and get off at Keisei Ueno station. ¥1,920/one way. Traveling time is approx. 60 minutes. If you take JR Yamanote line or Keihin tohoku line from Ueno station to Kanda station, it takes about 6 minutes and costs ¥130/one way. If you take a taxi from Ueno station, the taxi fee is approx ¥1,200.

From Haneda Airport:

Take Tokyo Monorail Kaisoku for "Hamamatsucho" and get off at Hamamatsucho station. ¥470/ one way. Traveling time is approx. 17 minutes. And then take JR Yamanote Line for "Ueno" from Hamamatsucho station to Kanda station. Traveling time is approx. 8 minutes. ¥150/one way. From the station to the FS Kanda Inn, it takes about 5 minutes on foot.

The information above is subject to change without notice