



# WEEKLY MANSION HIGASHI-UENO

20120427

Address: 5-5-13, Higashiueno, Taito-ku, Tokyo, Japan 〒110-0015  
Phone: 81-3-3842-2461/Fax: 81-3-3841-0165 (Business Hours are between 9 A.M. and 6 P.M.)

**Reservations:** Contact us at 81-3-3434-3939 (Tel) 81-3-6891-7711 (Fax)  
For English, Please contact us between 9 A.M. and 6 P.M. from Mon to Fri.

## ■ On Site Pay Services:

- Coin laundries/Driers
- Vending machine (Beverages/ Newspaper)

## ■ In-Room Services and Amenities:

High-Speed Internet access/ TV  
Video-on-Demand  
Telephone/ Mini-refrigerator  
Air conditioner/ Bed (Exchange of sheets and pillowcases is a chargeable service and on request.)  
Desk/ Kitchenware and Tableware  
Bathroom/ Hairdrier

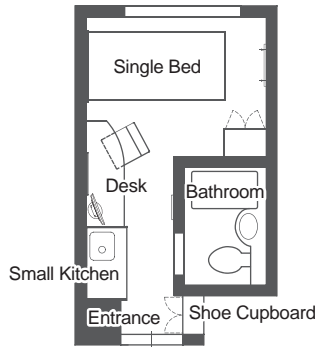
## ■ Business Services:

Copying and Facsimile Services  
Delivery service (Domestic only).  
\* These services are available only during business hours.

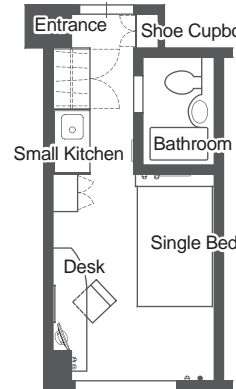
## Standard apartment layouts

(Some apartments may differ from the following.)

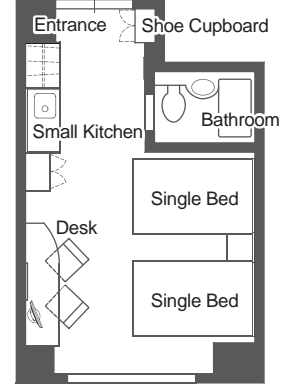
[ Single A ] 12m<sup>2</sup>



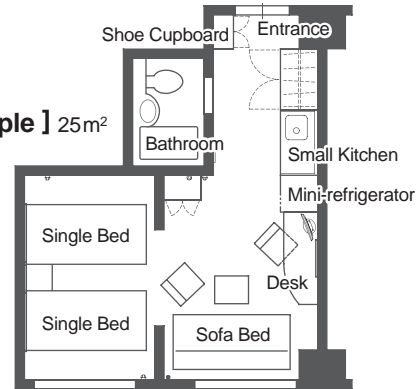
[ Single B ] 16m<sup>2</sup>



[ Twin ] 20m<sup>2</sup>



[ Triple ] 25m<sup>2</sup>



住所 : 〒110-0015 東京都台東区東上野5-5-13

電話 : 03-3842-2461

## The nearest stations:

1) JR Yamanote line, Ueno station, Iriya exit. 5-minute walk from the station.

## From Narita Airport:

Take Keisei Sky Liner for "Keisei Ueno" and get off at Keisei Ueno station. ¥1,920/ one way. Traveling time is approx. 60 minutes. From Keisei Ueno station to the WM Higashiueno, it takes about 15 minutes on foot. If you take a taxi from the station, the taxi fee is approx. ¥660.

## From Haneda Airport:

Take Tokyo Monorail Kaisoku for "Hamamatsucho" and get off at Hamamatsucho station. ¥ 470/ one way. Traveling time is approx. 17 minutes. And then take JR Yamanote Line for "Ueno" from Hamamatsucho station to Ueno station. Traveling time is approx. 13 minutes. ¥ 160/one way. From the station to the WM Higashi-Ueno, it takes about 5 minutes on foot.