



FLEXSTAY GOTANDA Inn

20110425

(Former WEEKLY MANSION GOTANDA)

Address: 2-5-4, Higashi-gotanda, Shinagawa-ku, Tokyo, Japan 〒141-0022

Phone: 81-3-3449-4831/Fax: 81-3-3449-4833 (Business Hours are between 8 A.M. and 10 P.M.)

Reservations: Contact us at 81-3-3434-3939 (Tel) 81-6891-7711 (Fax)

For English, Please contact us between 8 A.M. and 10 P.M. from Mon to Fri.

■ On Site Pay Services:

- Coin laundries/Driers
- Vending machine (Beverages/ Newspaper)

■ In-Room Services and Amenities:

High-Speed Internet access/ TV
 Video-on-Demand
 Telephone/ Mini-refrigerator
 Air conditioner/ Bed (Exchange of sheets and pillowcases is a chargeable service and on request.)
 Table/ Kitchenware and
 Tableware/ Bathroom/ Hair drier
 Electric kettle/ Alarm clock/ Western bathrobe
 Wash-toilet system
 Microwave

■ Business Services:

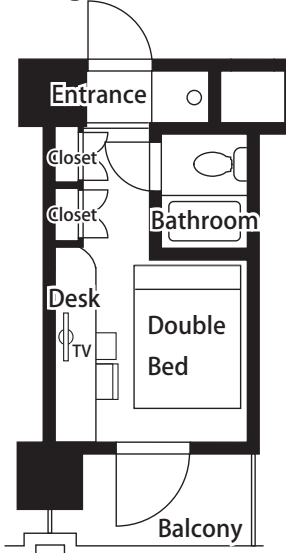
Copying and Facsimile Services
 Parcel delivery service (Domestic only).

* These services are available only during business hours.

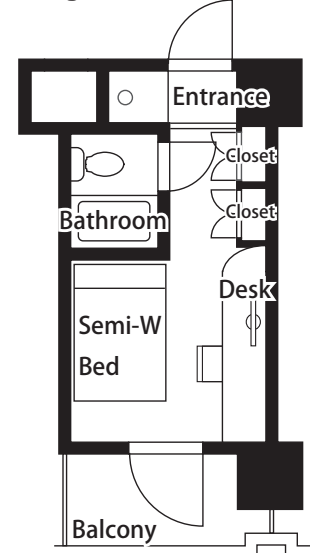
Standard apartment layouts

(Some apartments may differ from the following.)

[Single] 13m²



[Single] 13m²



住所 : 〒141-0022 東京都品川区東五反田2-5-4

電話 : 03-3449-4831

The nearest stations:

- 1) JR Yamanote line, Gotanda station, East exit. 5-minute walk from the station.
- 2) Tokyu Ikegami line, Gotanda station, 5-minutewalk from the station.
- 3) Toei Asakusa line, Gotanda station, A3 exit. 5-minute walk from the station.

From Narita Airport:

Take Keisei Sky Liner for "Keisei Ueno" and get off at Keisei Nippori station. ¥1,920/ one way. Traveling time is approx 60 minutes. And then take JR Yamanote line from Nippori station to Gotanda station. ¥250/ one way. It takes about 30 minutes. From Gotanda station to the FS Gotanda, it takes about 5 minutes on foot. If you take a taxi from the station, the taxi fee is approx. ¥710.

From Haneda Airport:

Take Keikyu Kuko Line Airport KAITOKU for "Narita Airport" and get off at Shinagawa station. ¥ 400/ one way. Traveling time is approx 17 minutes. And then take JR Yamanote line from Shinagawa station to Gotanda station. It takes about 5 minutes and costs ¥ 130/ one way. From the station to the FS Gotanda, it takes about 5 minutes on foot.

The information above is subject to change without notice

WEEKLY MANSION TOKYO URL: <http://www.wmt.co.jp/en/>