



# WEEKLY MANSION FUKAGAWA

20110301

Address: 1-12-16, Tokiwa, Koto-ku, Tokyo, Japan 〒135-0006  
Phone: 81-3-5624-2641/Fax: 81-3-5624-2642 (Business Hours are between 9 A.M. and 6 P.M.)

**Reservations:** Contact us at 81-3-3434-3939 (Tel) 81-3-3434-3927 (Fax)  
For English, Please contact us between 9 A.M. and 6 P.M. from Mon to Fri.

## ■ On Site Pay Services:

- Coin laundries/Driers
- Parking lots
- Vending machine (Beverages/ Newspaper)

## ■ In-Room Services and Amenities:

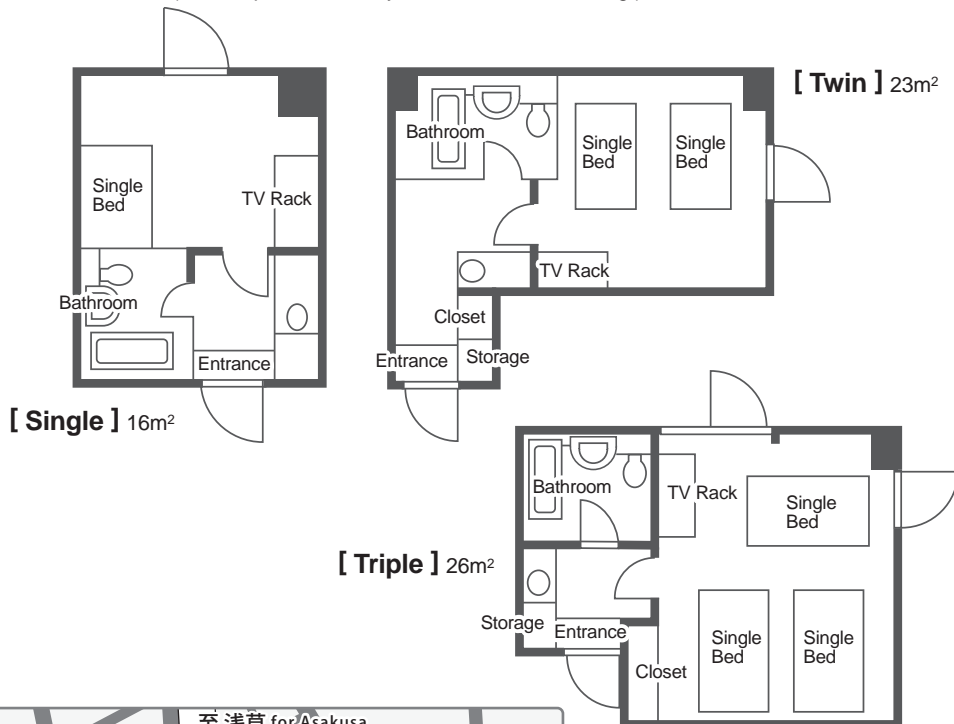
High-Speed Internet access/ TV  
Video-on-Demand  
Telephone/ Mini-refrigerator  
Air conditioner/ Bed (Exchange of sheets and pillowcases is a chargeable service and on request.)  
Table/ Kitchenware and Tableware  
Bathroom/ Hairdrier

## ■ Business Services:

Copying and Facsimile Services  
Delivery service (Domestic only).  
\* These services are available only during business hours.

## Standard apartment layouts

(Some apartments may differ from the following.)



住所: 〒135-0006 東京都江東区常盤1-12-16

電話: 03-5624-2641

## The nearest stations:

- 1) Toei Oedo line, Tokyo metro Hanzomon line, Kiyosumishirakawa station, A1 exit. 3-minute walk from the station.
- 2) Toei Shinjuku line, Morishita station, A1 exit. 6-minute walk from the station.

## From Narita Airport:

Take an Airport Limousine bus for "TOKYO CITY AIR TERMINAL" and get off at "T-CAT". ¥2,900/ one way. Traveling time is approx. 55 minutes. From T-CAT to the WM Fukagawa, it takes about 8 minutes and costs approx. ¥850 by taxi.

## From Haneda Airport:

Take Keikyu Kuko Line Airport KAITOKU for "Narita Airport" and get off at Daimon station.

And then take Toei Oedo line for "Tochomae" from Daimon station to Kiyosumishirakawa station.

It takes about 50 minutes and costs ¥640/ one way. From the station to the WM Fukagawa, it takes about 3 minutes on foot.

The information above is subject to change without notice